

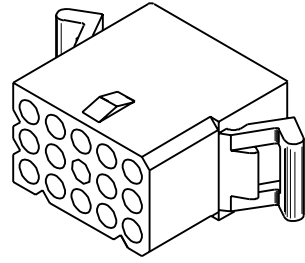
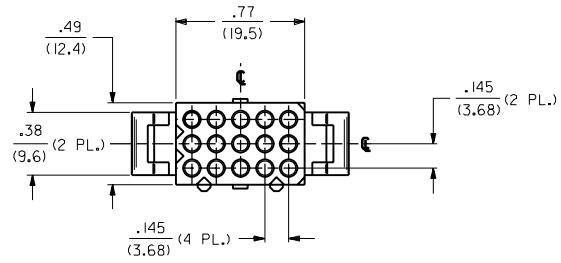
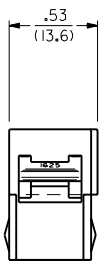
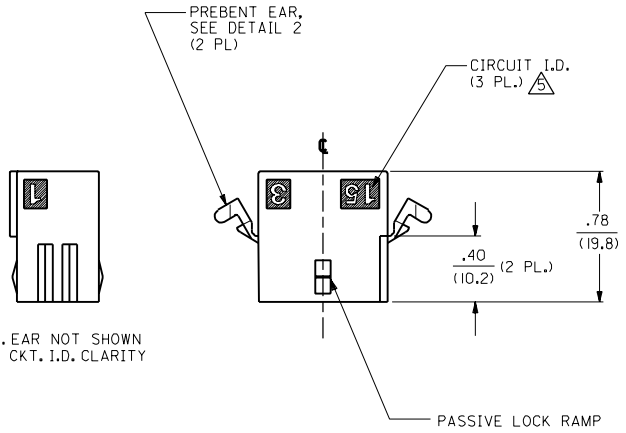
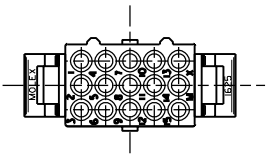
PLUG HOUSING

CHART AND NOTES ON SHEET 3

02	REVISION ECN #U70777 97-4-22 JI WANG
01	FINAL REL. - ISR2 ECN #U5 1285 6-22-95 RW
0	REVISE PER ECR U4 0050 OC 1/12/94 RW
P	REVISE PER ECN #U3 0508 4/1/93 RW
0	REVISE PER ECR U2 0850 OC 6/5/92 RW
N	REVISE PER ECR U1 2251 OC 11/20/91 RW
M	REVISE PER ECR U1 2108 OC 10/28/91 RW
L	REMOVE PT.NO. FROM -ISR2, ECR U1 1908 OC 9/20/91 RW
K1	ADDED & FINAL REL PER ERO #28346 GEP 5-4-89 RW
K	ADDED OPTIONS ECR # U90277 KBW 03-22-89 RW
J	ADDED OPTIONS ECR # UB2108 KBW 10-10-88 RW
H	REV. & REDRAWN ECR U8 1714 GEP 7-15-88 RW
3	02
2	02
1	02

MFG.	SH.	REV.	LTR.	REVISIONS

DIMENSIONS SHOWN METRIC (INCH)		▽ = 0	▼ = 0	REVISE ONLY ON CAD SYSTEM
UNLESS OTHERWISE SPECIFIED TOLERANCES: ANGULAR ± .05°		TITLE		
		.062/(1.57) HOUSING; PLUG AND RECEPTACLE; 15 CKT. ± .145/(3.68) CTRS		
		PART NO. DATE		
		L15LEJLL 60532 U.S.A. 7/15/88		
MOLEX INCORPORATED		SHEET NO. 1 of 3		
SEE CHART		DRWG. NO. SD-1625-15		
DRWG. BY: CEP	CHKD. BY: RW	FILE NAME: S162515X1	DATE: 7/15/88	SIZE: CP
APP'D. BY: RAS	SCALE: 2:	THIS DRAWING CONTAINS INFORMATION THAT IS PROPRIETARY TO MOLEX INC. AND SHOULD NOT BE USED WITHOUT WRITTEN PERMISSION.		



RECEPTACLE HOUSING

CHART AND NOTES ON SHEET 3

		P	SEE SHT. 1
Q2	SEE SHT. 1	O	SEE SHT. 1
Q	SEE SHT. 1	H	SEE SHT. 1
LTR.	REVISIONS	LTR.	REVISIONS

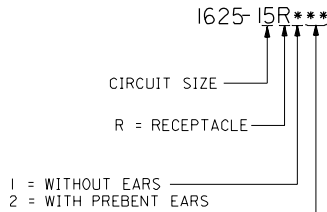
DIMENSIONS SHOWN METRIC () INCH	
UNLESS OTHERWISE SPECIFIED TOLERANCES: ANGULAR ± .001	
3 PLACE	± .010
2 PLACE	± .014
1 PLACE	± 0.35
DRAFT WHERE APPLICABLE MUST REMAIN WITHIN DIMENSIONS	
DRWG. BY: CEP	CHKD. BY: RW
APP'D. BY: RAS	SCALE: 2 : 1

TITLE		REVISIONS	
.062/(1.57) HOUSING; PLUG AND RECEPTACLE; 15 CKT. ± .145/(3.68) CTRS		SHEET NO. 2	DATE 7/18/88
MOLEX INCORPORATED		LITSEJLL 60532 U.S.A.	
PART NO. SEE CHART		DRWG. NO. SD-1625-15	
FILE NAME S162515X2.DWG		THIS DRAWING CONTAINS INFORMATION THAT IS PROPRIETARY TO MOLEX INC. AND SHOULD NOT BE USED WITHOUT WRITTEN PERMISSION.	
DRW. BY	CHKD. BY	APP'D. BY	SCALE
CEP	RW	RAS	2 : 1
DRW. NO.	FILE NAME	APP'D. BY	SCALE
SD-1625-15	S162515X2.DWG	RAS	2 : 1

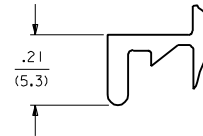
PLUG	
PART NO.	ENG. NO.
03-06-2151/A	1625-15P
03-06-7155	1625-15P1BN
03-06-7152	1625-15P1BK
03-06-2152	1625-15P1
03-06-7151/A	1625-15PBK
03-06-7153/A	1625-15PBN
03-06-7154/A	1625-15PBU

RECEPTACLE	
PART NO.	ENG. NO.
03-06-1152	1625-15R1
03-06-6152	1625-15R1BK
03-06-6155	1625-15R2
NOT TOOLED	1625-15R2BK

RECEPTACLE LEGEND:

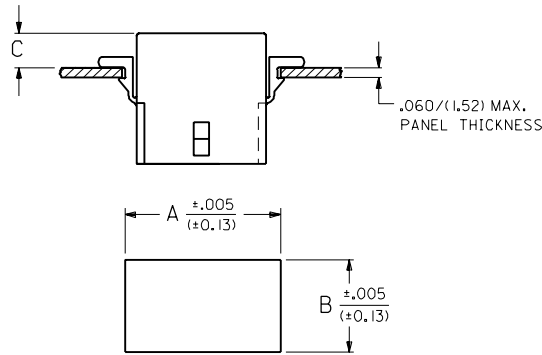
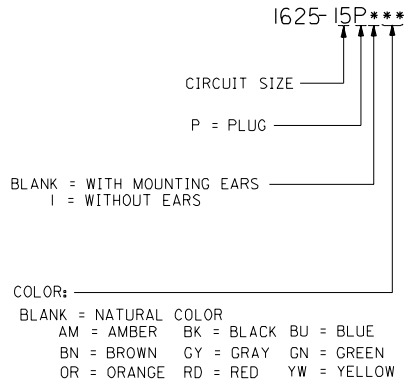


COLOR: _____
 BLANK = NATURAL COLOR
 AM = AMBER BK = BLACK BU = BLUE
 BN = BROWN CY = GRAY GN = GREEN
 OR = ORANGE RD = RED YW = YELLOW



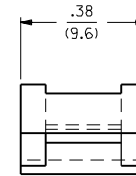
DETAIL 1
 STANDARD MOUNTING EAR
 SCALE 4:1

PLUG LEGEND:



RECOMMENDED HOLE PATTERN

RECEP.	.930 (23.62)	.569 (14.45)		.22 (5.6)
PLUG	1.032 (26.21)	.620 (15.75)	.20 (5.1)	.21 (5.3)
PART	DIM. A	DIM. B	DIM. C (STANDARD EAR)	DIM. C (PREBENT EAR)



DETAIL 2
 .062/(1.57)PREBENT MOUNTING EAR
 (SCALE 4:1)

NOTES:

- MATERIAL: NYLON TYPE 6/6, 94V-2.
- THIS PART COMPLIES WITH MOLEX PRODUCT SPEC. 02-06.
- THIS HOUSING FOR USE WITH .062/(1.57) DIA. TERMINALS.
- WHERE DENOTED IN CHART, TOOLS ARE BUILT WITH PREBENT MOUNTING EARS PER DETAIL 2 AND SUPERSEDE ALL TOOLS PREVIOUSLY BUILT WITH THE STANDARD MOUNTING EARS.
- CIRCUIT I.D. NUMBERS ON HOUSING APPEAR ON PART FROM TOOLS BUILT AFTER 1/15/94.

REV.	DATE	BY	CHKD.	REVISIONS
Q2		SEE SHEET I	KI	SEE SHEET I
Q1		SEE SHEET I	K	SEE SHEET I
0		SEE SHEET I	J	SEE SHEET I
0		SEE SHEET I	H	SEE SHEET I
LTR.		REVISIONS	LTR.	REVISIONS

DIMENSIONS SHOWN METRIC (INCH) UNLESS OTHERWISE SPECIFIED TOLERANCES: ANGULAR ± .05°

INCH METRIC

3 PLACE	± .010	---
2 PLACE	± .014	± 0.25
1 PLACE	---	± 0.35

DRAFT WHERE APPLICABLE MUST REMAIN WITHIN DIMENSIONS

DRWG. NO. 60532

FILE NAME: S162515X3.DWG

SCALE: 2 : 1

REVISE ONLY ON CAD SYSTEM

TITLE: .062/(1.57) HOUSING; PLUG AND RECEPTACLE; 15 CKT. ± .145/(3.68) CTRS

MOLEX INCORPORATED

SHEET NO. 3 DATE 7/18/88

PART NO. SD-1625-15

SEE CHART

THIS DRAWING CONTAINS INFORMATION THAT IS PROPRIETARY TO MOLEX INC. AND SHOULD NOT BE USED WITHOUT WRITTEN PERMISSION.